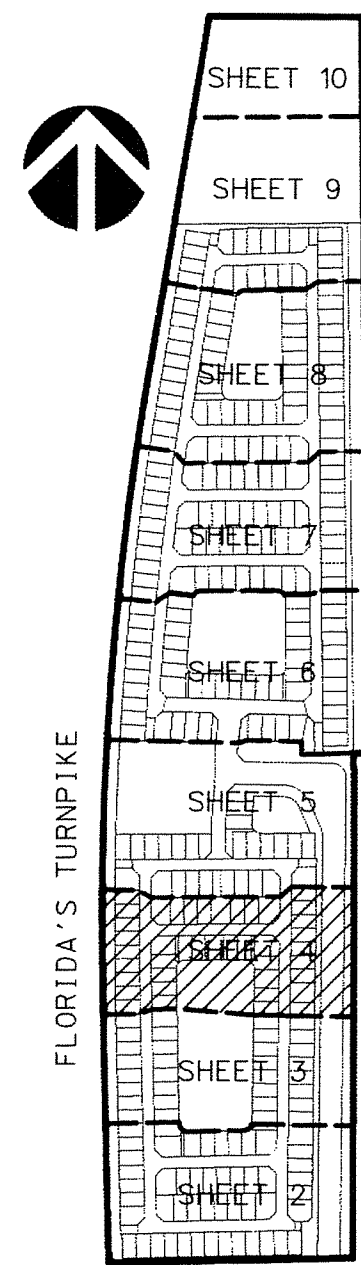


PERIMETER
 SURVEYING & MAPPING
 Certificate of Authorization No. LB7264
 Prepared by Jeff S. Hodapp, P.S.M.
 947 Clint Moore Road
 Boca Raton, Florida 33487
 Tel: (561) 241-9988
 Fax: (561) 241-6182



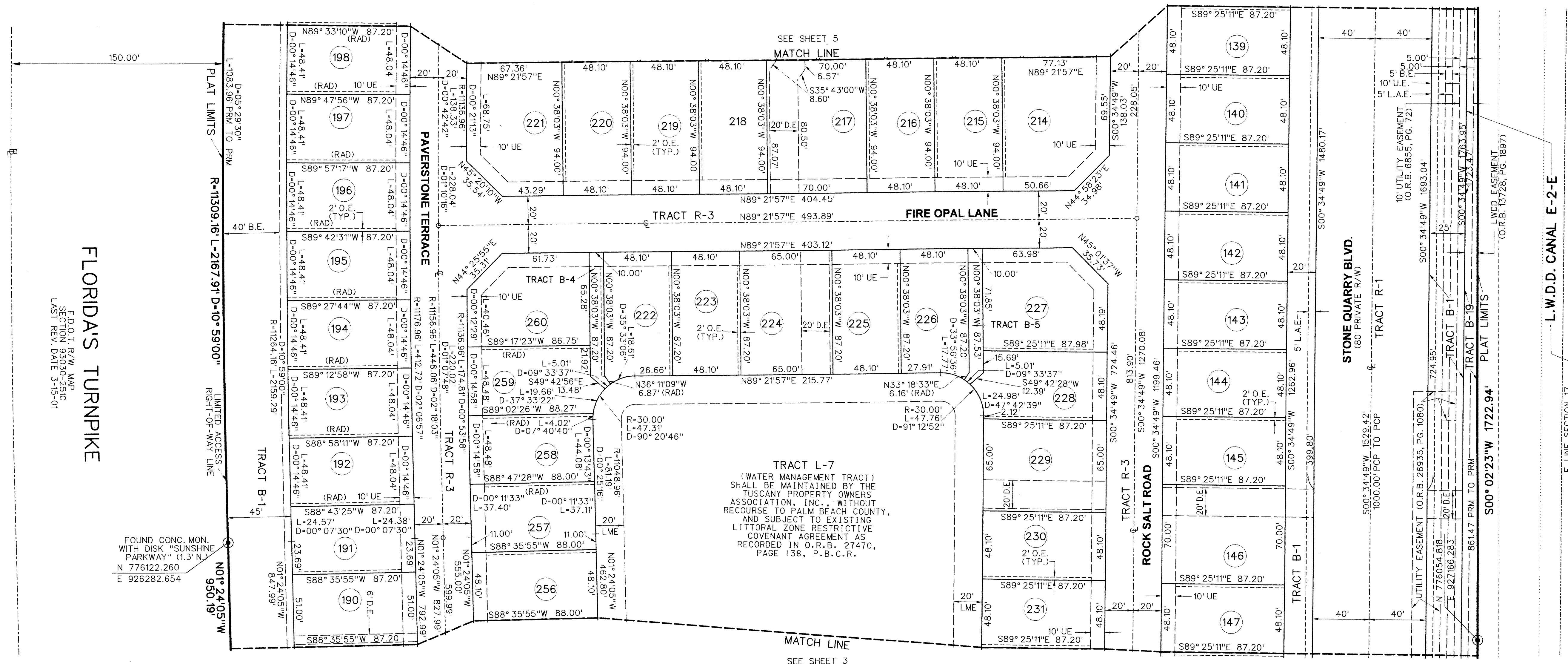
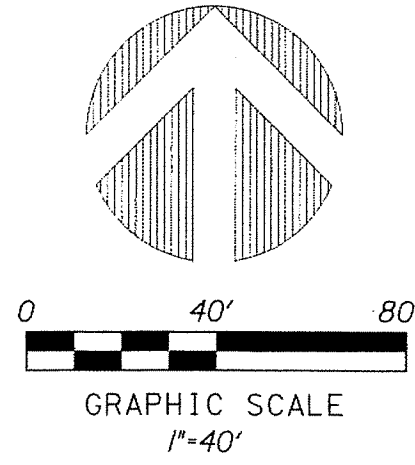
KEY MAP NOT TO SCALE

ATLANTIC COMMONS - PLAT FIVE

A REPLAT OF PORTIONS OF TRACTS 1-3 AND 30-35 IN SECTION 17, TOWNSHIP 46 SOUTH, RANGE 42 EAST, AND PORTIONS OF TRACTS 65, 66, 94-99 AND 126-128 IN SECTION 8, TOWNSHIP 46 SOUTH, RANGE 42 EAST, OF "PALM BEACH FARMS CO. PLAT NO.1" (P.B. 2, PGS 26-28, P.B.C.R.)
 PALM BEACH COUNTY, FLORIDA.

- LEGEND:**
- SET P.R.M. (UNLESS OTHERWISE NOTED)-4" X4" CONC. MON. WITH ALUMINUM DISK STAMPED P.R.M.+LB7264
 - PERMANENT CONTROL POINT (NAIL & DISK +LB7264)
 - ⊕ CENTERLINE
- ABBREVIATIONS:**
- ALUM ALUMINUM
 - B.E. BUFFER EASEMENT
 - CH CHORD
 - CHB CHORD BEARING
 - CONC. CONCRETE
 - COR. CORNER
 - D DELTA (CENTRAL ANGLE)
 - D.E. DRAINAGE EASEMENT
 - D.T. DRIVEWAY TRACT
 - F FOUND
 - L. ARCLength
 - L.A.E. LIMITED ACCESS EASEMENT
 - L.B.E. LANDSCAPE BUFFER EASEMENT
 - L.B. LICENSED BUSINESS
 - L.E. LANDSCAPE EASEMENT
 - L.M.E. LAKE MAINTENANCE EASEMENT
 - L.M.A.E. LAKE MAINTENANCE ACCESS EASEMENT
 - L.S. LICENSED SURVEYOR
 - L.S.E. LIFT STATION EASEMENT
 - L.W.D.D. LAKE WORTH DRAINAGE DISTRICT

- MON. MONUMENT
- O.E. MAINTENANCE AND ROOF OVERHANG EASEMENT
- O.R.B. OFFICIAL RECORDS BOOK
- NON-R. NON-RADIAL
- N.B. NOTED BOOK
- P.B. PALM BEACH COUNTY
- P.B.C. PALM BEACH COUNTY RECORDS
- P.B.C.R. PALM BEACH COUNTY UTILITY EASEMENT
- P.B.C.U.E. PAGE
- P.C.P. PERMANENT CONTROL POINT
- P.O.B. POINT OF BEGINNING
- P.O.C. POINT OF COMMENCEMENT
- P.R.M. PERMANENT REFERENCE MONUMENT
- P.S.M. PROFESSIONAL SURVEYOR & MAPPER
- P.U.D. PLANNED UNIT DEVELOPMENT
- R. RADIUS
- RAD. RADIAL
- R.P.B. ROAD PLAT BOOK
- R/W. RIGHT-OF-WAY
- SEC. SECTION
- S.F. SQUARE FEET
- U.E. UTILITY EASEMENT



FLORIDA'S TURNPIKE
 F.D.O.T. R/W MAP
 SECTION 93030-2510
 LAST REV. DATE 3-16-01

FOUND CONC. MON. WITH DISK "SUNSHINE PARKWAY" (1.3" N.)
 N 776122.260
 E 926282.654

TRACT L-7
 (WATER MANAGEMENT TRACT) SHALL BE MAINTAINED BY THE TUSCANY PROPERTY OWNERS ASSOCIATION, INC., WITHOUT RECOURSE TO PALM BEACH COUNTY, AND SUBJECT TO EXISTING LITTORAL ZONE RESTRICTIVE COVENANT AGREEMENT AS RECORDED IN O.R.B. 27470, PAGE 138, P.B.C.R.

L.W.D.D. CANAL E-2-E

E.LINE SECTION 17